



Cable ID: UTP-0.57-CCA.

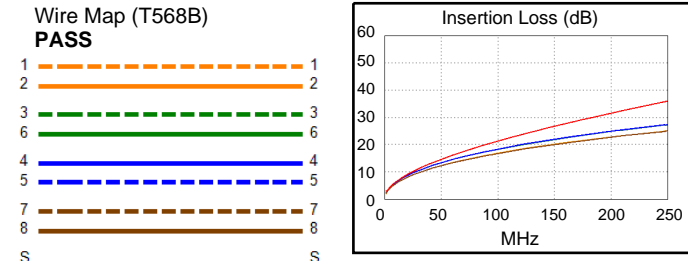
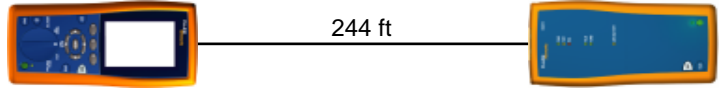
Date / Time: 08/03/2023 02:56:43 PM
Headroom 4.1 dB (NEXT 12-45)
 Test Limit: TIA Cat 6 Channel
 Cable Type: Cat 6 UTP
 NVP: 70.4%

Operator: HYP
 Software Version: 2.7400
 Limits Version: 1.9300
 Calibration Date:
 Main (Tester): 08/27/2014
 Remote (Tester): 08/27/2014

Test Summary: PASS

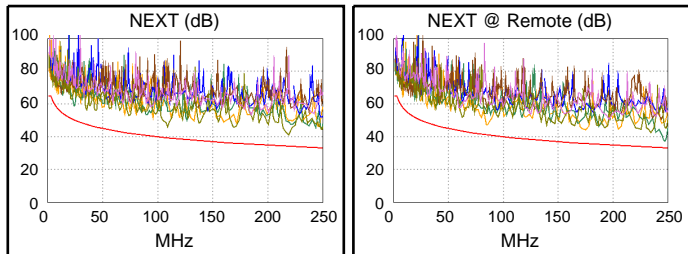
Model: DTX-1800
 Main S/N: 2800045
 Remote S/N: 2800046
 Main Adapter: DTX-CHA002
 Remote Adapter: DTX-CHA002

Length (ft), Limit 328	[Pair 78]	244
Prop. Delay (ns), Limit 555	[Pair 45]	370
Delay Skew (ns), Limit 50	[Pair 45]	18
Resistance (ohms)	[Pair 45]	28.3
Insertion Loss Margin (dB)	[Pair 45]	8.5
Frequency (MHz)	[Pair 45]	250.0
Limit (dB)	[Pair 45]	35.9

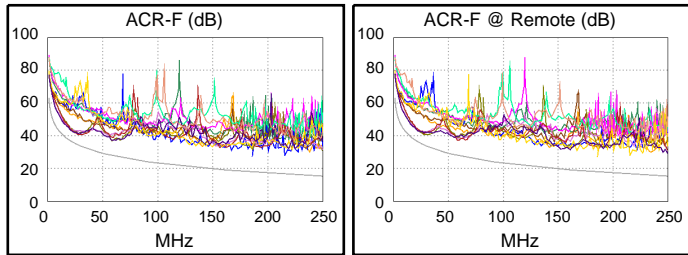


Worst Case Margin Worst Case Value

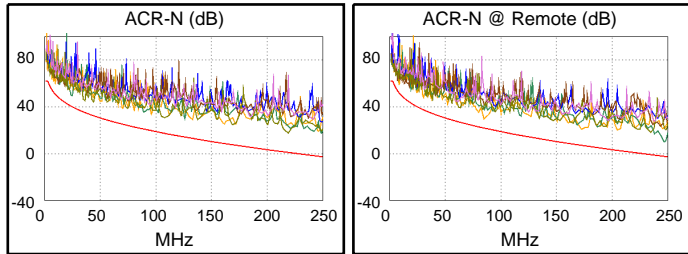
PASS	MAIN	SR	MAIN	SR
Worst Pair	36-78	12-45	36-78	12-45
NEXT (dB)	6.7	4.1	7.1	4.1
Freq. (MHz)	109.0	247.0	219.0	247.0
Limit (dB)	39.3	33.2	34.1	33.2
Worst Pair	36	12	36	12
PS NEXT (dB)	9.4	6.8	9.4	6.8
Freq. (MHz)	219.0	247.0	219.0	247.0
Limit (dB)	31.2	30.2	31.2	30.2



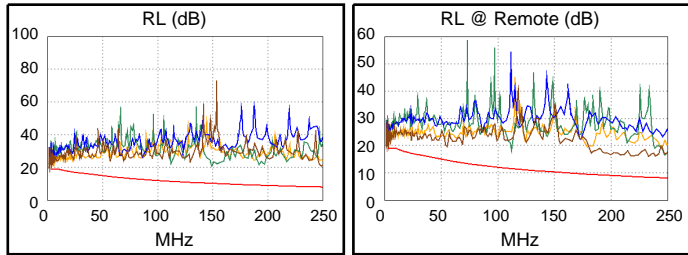
PASS	MAIN	SR	MAIN	SR
Worst Pair	45-36	36-45	12-78	78-12
ACR-F (dB)	6.0	6.0	11.3	11.2
Freq. (MHz)	27.1	27.1	216.0	216.0
Limit (dB)	34.6	34.6	16.6	16.6
Worst Pair	36	36	78	12
PS ACR-F (dB)	6.1	7.2	14.0	13.8
Freq. (MHz)	22.4	22.4	216.0	216.0
Limit (dB)	33.3	33.3	13.6	13.6



N/A	MAIN	SR	MAIN	SR
Worst Pair	12-45	12-36	12-45	12-45
ACR-N (dB)	9.0	7.0	20.1	12.5
Freq. (MHz)	24.0	8.4	249.0	247.0
Limit (dB)	40.4	52.0	-2.7	-2.5
Worst Pair	36	36	36	45
PS ACR-N (dB)	9.9	8.7	17.1	15.4
Freq. (MHz)	4.3	8.1	219.0	247.0
Limit (dB)	56.0	49.8	-2.1	-5.4



PASS	MAIN	SR	MAIN	SR
Worst Pair	78	78	78	78
RL (dB)	1.4*	1.3*	1.4	6.9
Freq. (MHz)	3.4	3.4	3.4	216.5
Limit (dB)	19.0	19.0	19.0	8.6



Compliant Network Standards:
 10BASE-T 100BASE-TX 100BASE-T4
 1000BASE-T ATM-25 ATM-51
 ATM-155 100VG-AnyLan TR-4
 TR-16 Active TR-16 Passive

* Measurement is within the accuracy limits of the instrument.